

Specifications Sheet	No.SPEC-2508E	(1st Edition)	$\rightarrow f(x) \rightarrow$
SE7101A	Distributor		

OUTLINE

This distributor supplies power to various types of 2-wired transmitters and outputs 4 to 20mADC by isolating the output current signal of 4 to 20mA from a transmitter or 1 to 5 VDC by converting it directly. In addition, by the overcurrent limiting function built-in, this unit can operate properly when any short-circuit is happened at the transmitter side. In this distributor, two types, an input/output isolated type or an input/output non-isolated type, are available.



SPECIFICATIONS

Input signal:

4 to 20mADC (Output signal from a transmitter)

Output signal:

4 to 20mADC (Input/output isolated type, maximum load resistance 550Ω)

1 to 5VDC (Input/output non-isolated type, output impedance 250Ω)

Accuracy rating: $\pm 0.1\%$

Temperature coefficient: $\pm 100\text{ppm}/^\circ\text{C}$

Response time:

100ms or less (90% response)

Power supplied to transmitter:

24VDC $\pm 1\%$

(Allowable voltage fluctuation: 19 to 28VDC)

Current supplied to transmitter: 22mA or less

Overcurrent limitation: 35mA or less

Power supply ripple: 50mVp-p or less

Power supply:

Rated voltage 100VAC, 110VAC or 115VAC ($\pm 10\%$), 50/60Hz

Electric power consumption:

About 3.5VA (Input/output isolated type)

About 2.5VA (Input/output non-isolated type)

Operating temperature range: -10 to 50°C

Operating humidity range:

5 to 95%RH (No condensation)

Electrical connection:

Plug-in type (Octal socket)

Terminal connection:

M3.5 screw

Housing color/material: Black/Plastic case

Mounting:

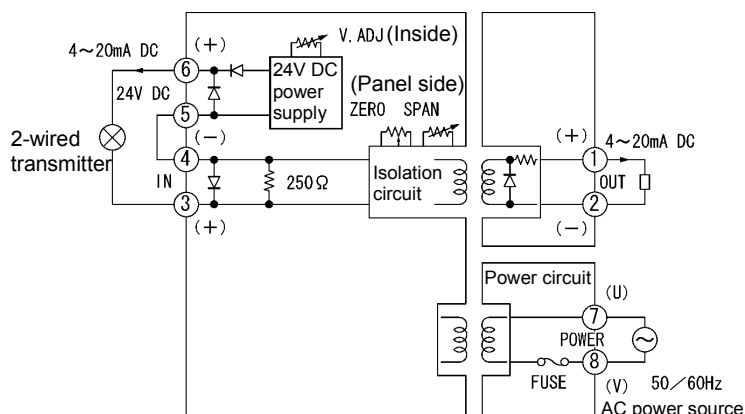
Wall or DIN-rail mounting

Dimensions: 50 (W) \times 80 (H) \times 123 (D) (mm)

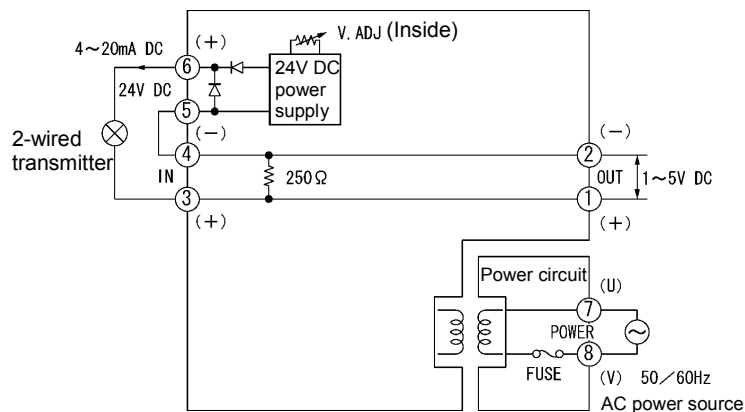
Mass: Approx. 400g

Block diagram

Input/output isolated type (SE7101A01)



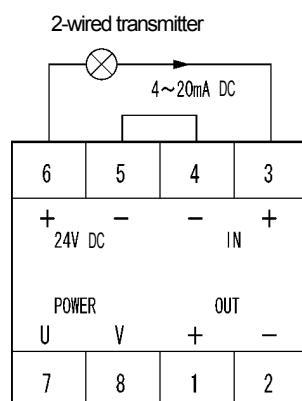
Input/output non-isolated type (SE7101A02)



MODEL CODE NUMBER

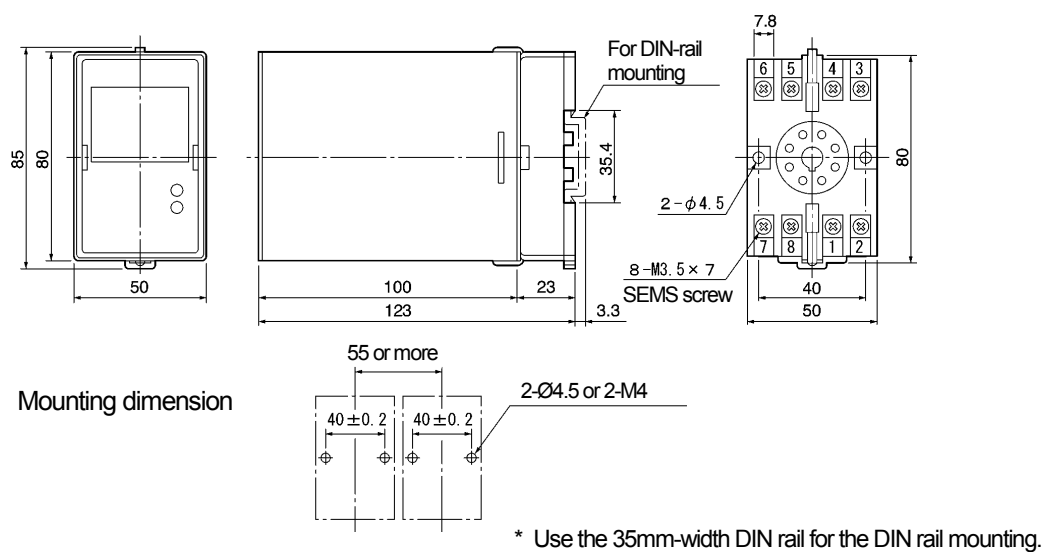
Model	Isolation	Mounting	Power input voltage	Contents
SE7101A	01			Input/output isolated
	02			Input/output non-isolated
		W		Wall or DIN-rail mounting
			1	100VAC, 50/60Hz
			2	115VAC, 50/60Hz
			3	110VAC, 50/60Hz

Terminal arrangement



Dimensions

Unit: mm



Option

Externally mounting resistor

Model: HMSU3081A05 Resistance value: $250\Omega \pm 0.05\%$

* Required for the output of 1 to 5VDC

Mounting panel

Model: H4Y45946

* Required for the replacement of SE4101

CAUTION

Do not install this device before consulting instruction manual

Ohkura

OHKURA ELECTRIC CO., LTD.

Head Office / Factory

Sales Offices

URL

e-mail (in English)

Saitama, JAPAN

Tokyo, Osaka, Nagoya, Kyushu, Tohoku

<http://www.ohkura.co.jp/>

intsales@ohkura.co.jp

Specifications are subject to change without notice.

For further information, a quotation or a demonstration please contact to: