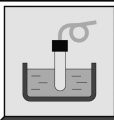


Specifications Sheet	No.SPEC-3208E	(2nd Edition)	
CI	CONDUCTIVITY CELL		

OUTLINE

MODEL CI CONDUCTIVITY CELL IS AVAILABLE FOR VARIOUS APPLICATIONS IN CONTINUOUS CONDUCTIVITY (MEASUREMENT).



Screw type

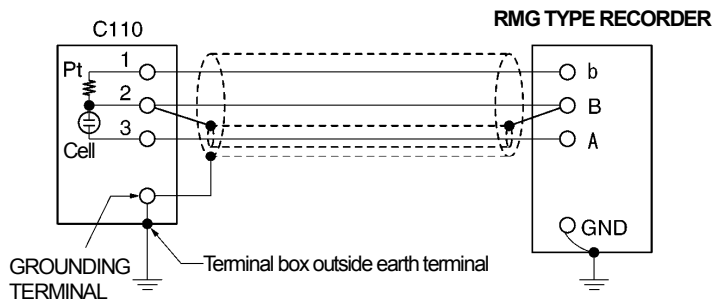
Coupling
Nut type

Flange type

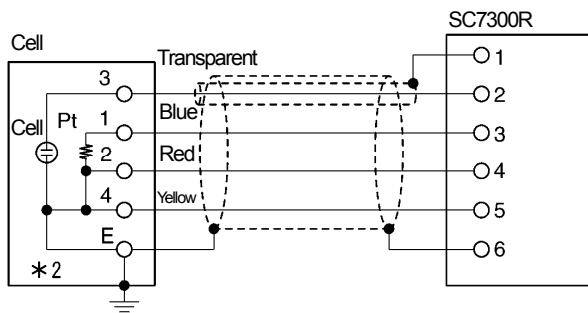
Model		CI 10	CI 355
Cell Constant		1.0, 10.0 or 100m ⁻¹ (0.01, 0.1 or 1.0cm ⁻¹)	1000m ⁻¹ (10.0cm ⁻¹)
Process connection	Flange	JIS 10K-50A equivalent	JIS 10K-50A equivalent
	Screw	R3/4 (PT3/4 Male)	R1 1/4 (PT1 1/4 Male)
	Coupling Nut	G1 (PF1 Female)	-----
	Valve	Rc1(PT1 Female)	-----
Operating pressure		1MPa (10kgf/cm ²) max.	0.2MPa (2kgf/cm ²) max.
Operating temperature		0 ~ 100°C	0 ~ 80°C
Temperature compensation element	Pt1000	0 ~ 100°C	0 ~ 80°C
Material	Electrode	Stainless steel 316, Carbon graphite	Gold with platinum-black coating
	Skirt	Stainless Steel 316	Polypropylene
	Insulator	Polyphenylene sulphide	Polypropylene
	Sleeve	Stainless Steel 316	Polypropylene
	Flange/thread	Stainless steel 304	Polypropylene
Weight	Flange mount	Approx. 3.0kg	Approx. 1.0kg
	Screw mount	Approx. 0.8kg	Approx. 0.7kg
	Coupling nut mount	Approx. 0.9kg	-----
	Valve mount	Approx. 3.3kg	-----

WIRING

(1) CI 10 & RMG TYPE RECORDER

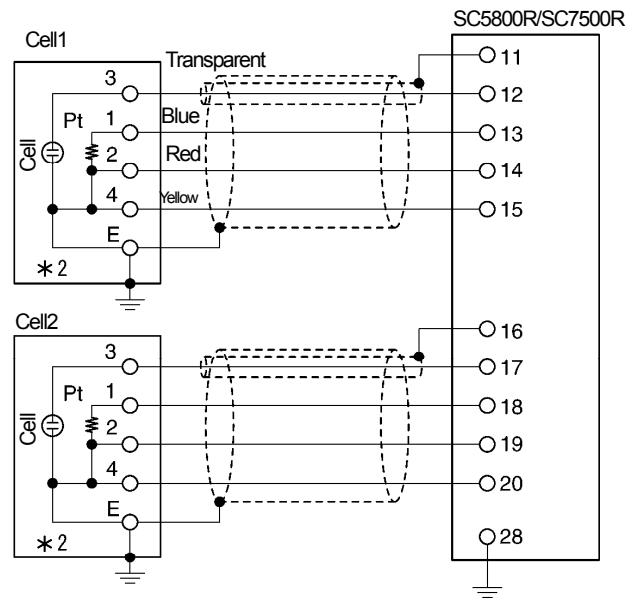


(3) CI 10□5 OR CI355 & SC7300R

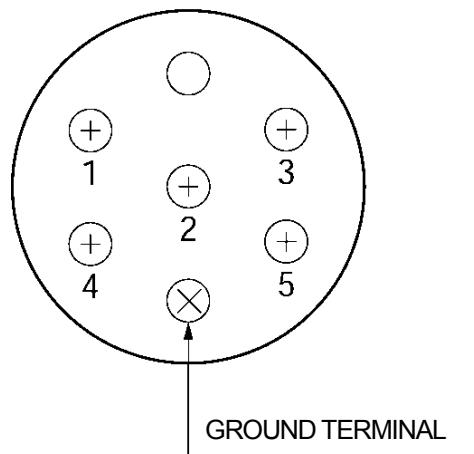


*2 For CI 10□5

(2) CI 10□5 OR CI355 & SC5800R OR SC7500R



TERMINAL BOX LEAD ASSIGNMENT



CI 10 TYPE CELL
CI355 TYPE CELL

MODEL CODE NUMBER

MODEL	DESCRIPTION	
CI10	Conductivity Cell. Chose cell constant and process/ electrical, connection below	
	CODE	CELL CONSTANT
	1	$K = 1.0\text{m}^{-1}$ (0.01 cm^{-1})
	2	$K = 10.0\text{m}^{-1}$ (0.1 cm^{-1})
	3	$K = 100\text{m}^{-1}$ (1.0 cm^{-1})
	CODE	TEMPERATURE COMPENSATION
	0	No temperature compensator installed
	5	Pt1000 at 0°C, compensation range 0 to 100°C, for SC5800R, SC7300R and SC7500R
	9	Custom, consult factory
	CODE	PROCESS CONNECTION
	F	Flange JIS 10K-50A
	S	Screw thread JIS R3/4 (PT3/4 M)
	N	Coupling nut JIS G1 (PF1 F)
	V	Valve JIS Rc1 (PT1 F)
	C	Valve with retractable cell
	Z	Custom, consult factory
	CODE	ELECTRICAL CONNECTION
	1	Cable type (2m cable)
	2	Terminal box type
	3	Connector type (with 2m cable)

MODEL	DESCRIPTION	
CI35	Conductivity Cell. Chose cell constant and process/ elet, connection below	
	CODE	TEMPERATURE COMPENSATION
	5	Pt1000 at 0°C, compensation range 0 to 100°C, for SC5800 and SC7300
	CODE	PROCESS CONNECTION
	F	Flange JIS 10K-50A
	S	Screw thread JIS R3/4 (PT3/4 M)
	Z	Custom, consult factory
	CODE	ELECTRICAL CONNECTION
	1	Cable type (2m cable)
	2	Terminal box type
	3	Connector type (with 2m cable)

ACCESSORIES

MODEL	DESCRIPTION
CH1001	Cell chamber for CI10xxNx, SUS304, 1.5kg
CH906	Cell chamber for CI35xxS, PP, 0.2MPa max, 0.3kg
TB1001	Junction box for CI10xxx1, CIxxx3, CI35xx1 and CI35xx3
TB2001A3	

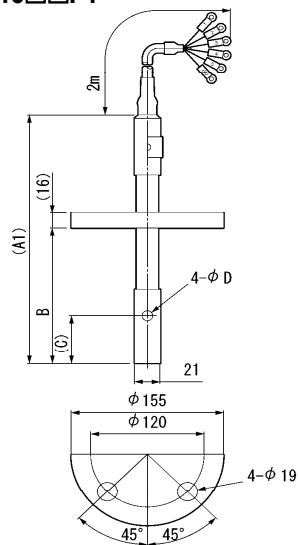
EXTENSION CABLE

PART No.	DESCRIPTION
WPSN040A000001A	4-core double shielded, $\Phi 8\text{mm}$ for SC5800R, SC7300R and SC7500R analyzer

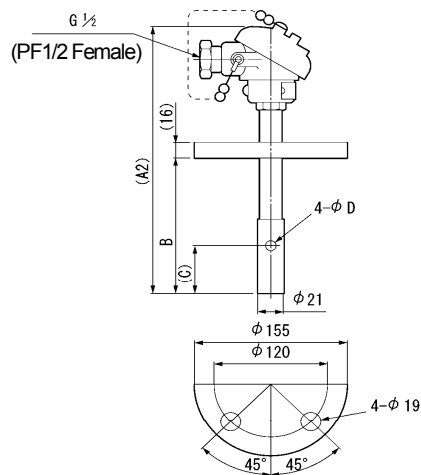
DIMENSIONS

(Unit: mm)

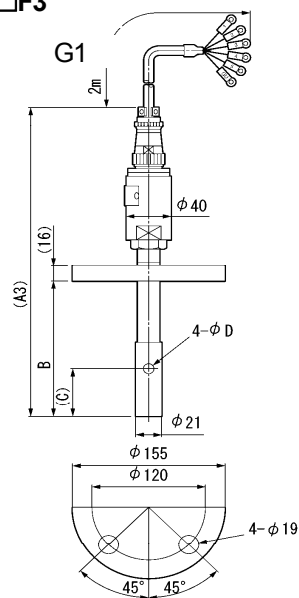
CI 10□□F1



CI 10□□F2

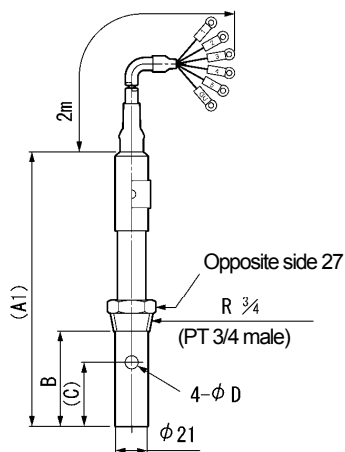


CI 10□□F3

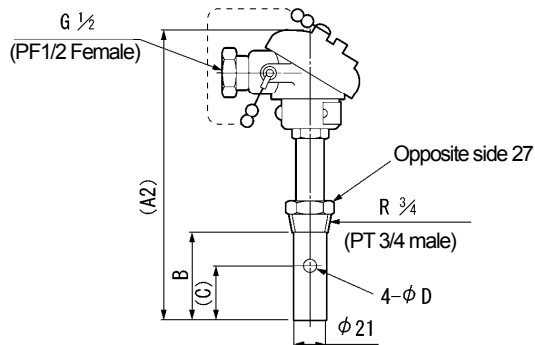


	DIMENSIONS					
MODEL	A1	A2	A3	B	C	D
CI 101□F□	(271)	(304)	(361)	150	(55)	8
CI 102□F□	(227)	(260)	(317)	106	(11)	6
CI 103□F□	(271)	(304)	(361)	150	(55)	8

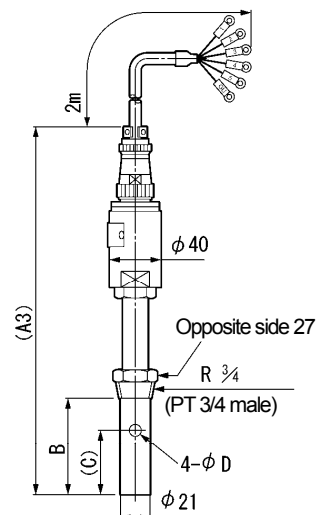
CI 10□□S1



CI 10□□S2

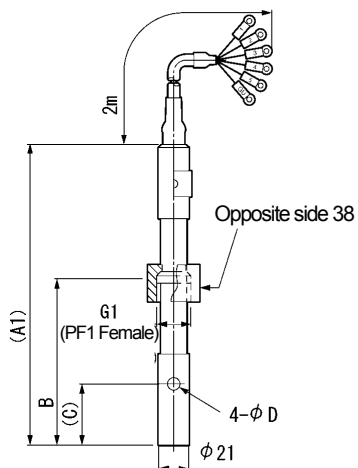


CI 10□□S3

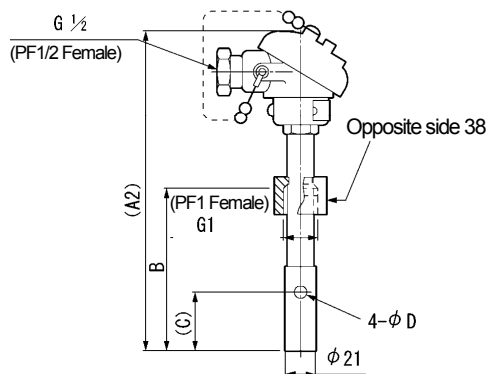


	DIMENSIONS					
MODEL	A1	A2	A3	B	C	D
CI 101□S□	(226)	(259)	(316)	81	(55)	8
CI 102□S□	(182)	(215)	(272)	37	(11)	6
CI 103□S□	(226)	(259)	(316)	81	(55)	8

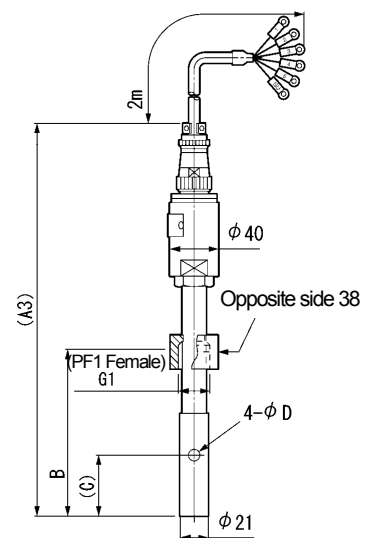
CI 10□□N1



CI 10□□N2

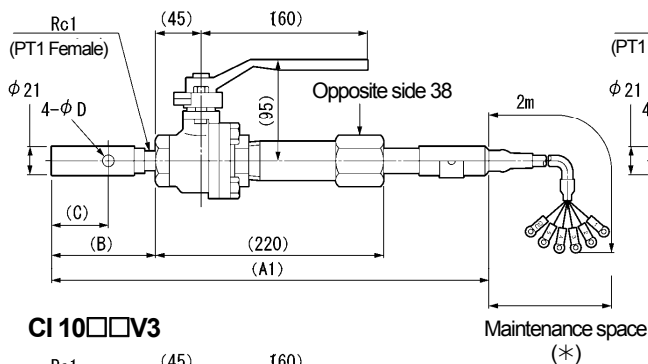


CI 10□□N3

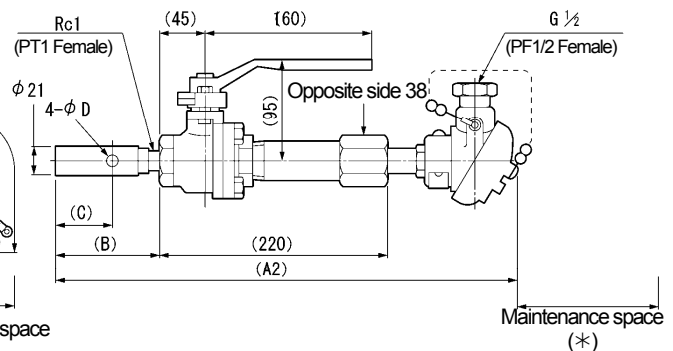


DIMENSIONS						
MODEL	A1	A2	A3	B	C	D
CI 101□□	(265)	(298)	(355)	150	(55)	8
CI 102□□	(221)	(254)	(311)	106	(11)	6
CI 103□□	(265)	(298)	(355)	150	(55)	8

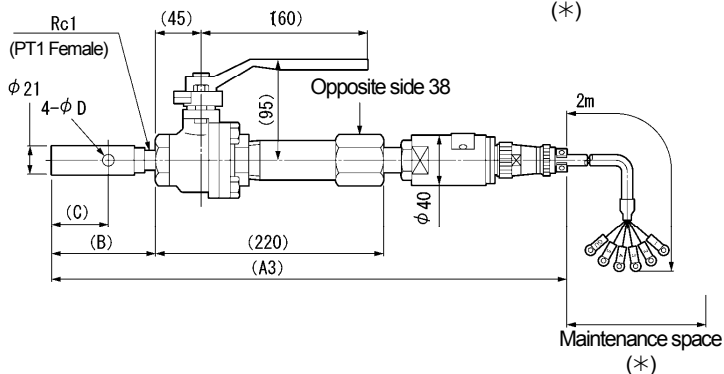
CI 10□□V1



CI 10□□V2



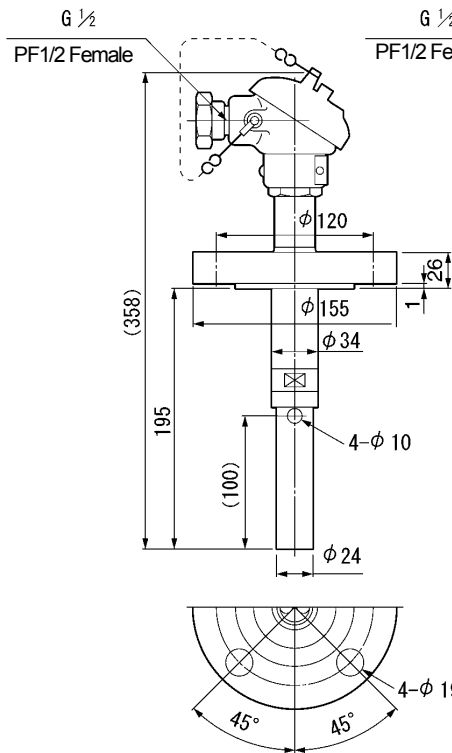
CI 10□□V3



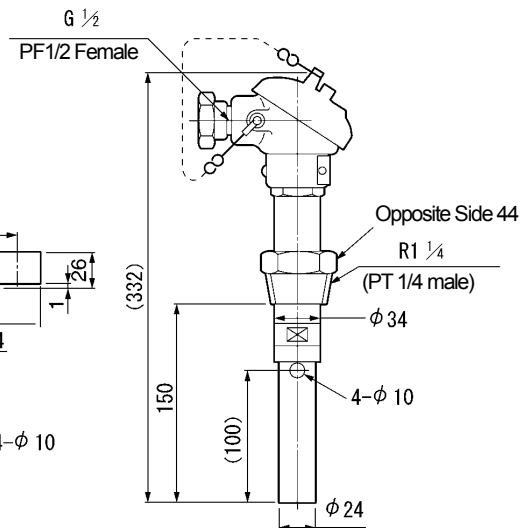
(*) Please secure the Maintenance space of more than size A.

DIMENSIONS						
MODEL	A1	A2	A3	B	C	D
CI 101□V□	(452)	(485)	(542)	(136)	(55)	8
CI 102□V□	(408)	(441)	(498)	(92)	(11)	6
CI 103□V□	(452)	(485)	(542)	(136)	(55)	8

CI 355F

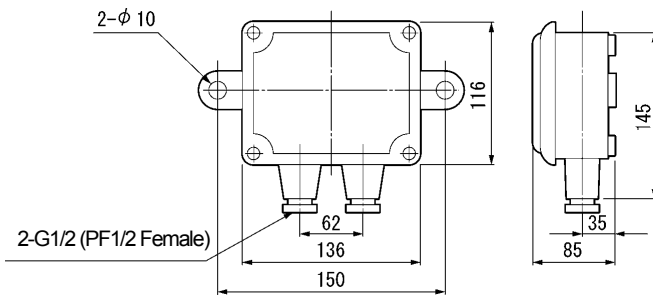


CI 355S

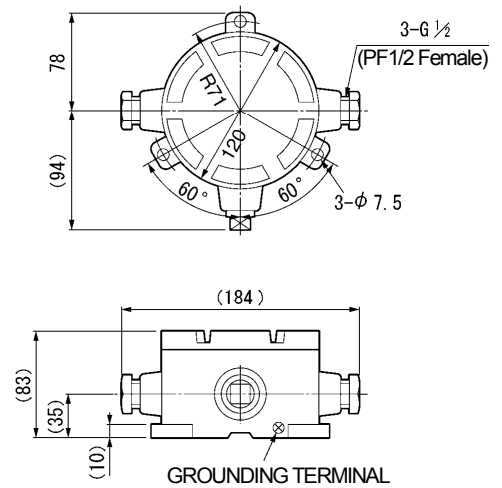


JUNCTION BOX

TB2001A3



TB1001



CELL CHAMBER

CH 906

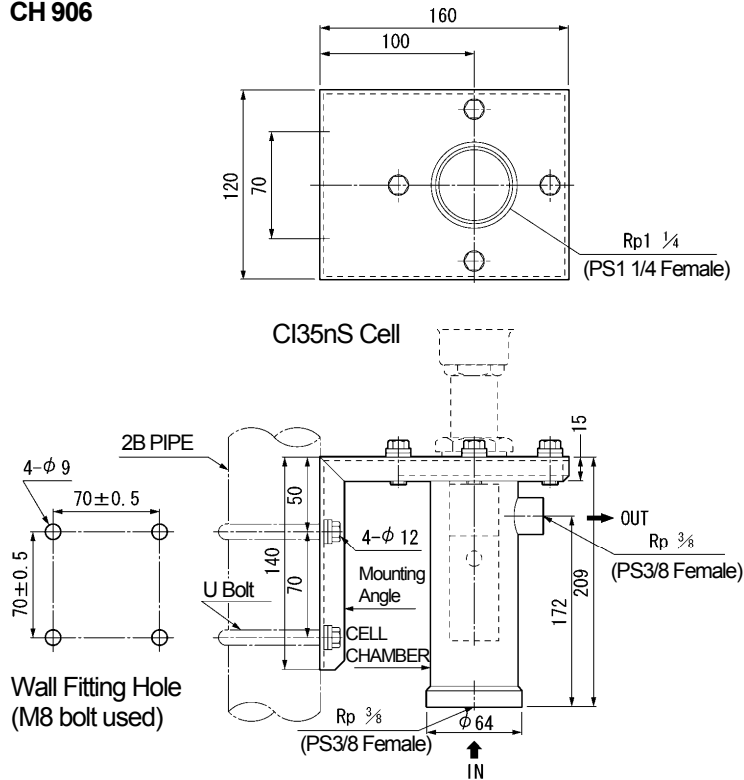


Figure of Pipe Fitting

CH 1001AN

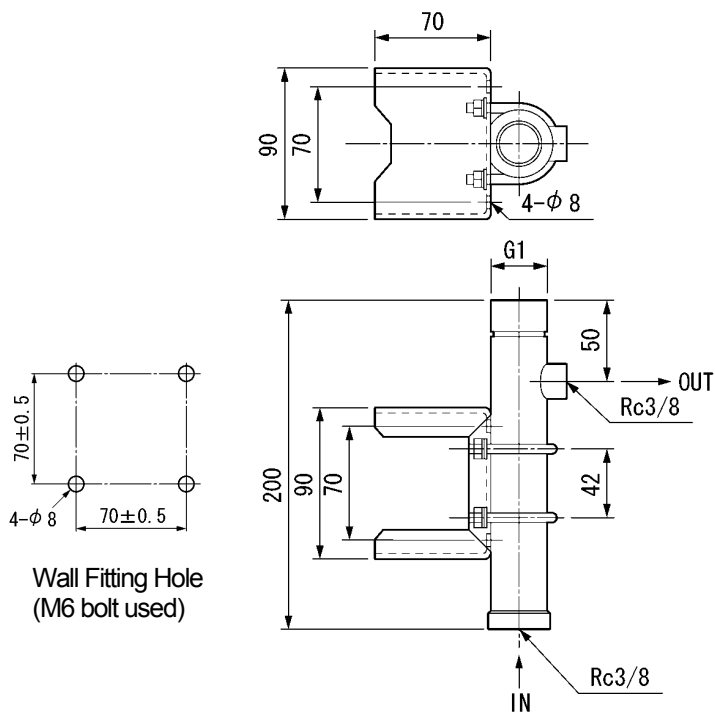
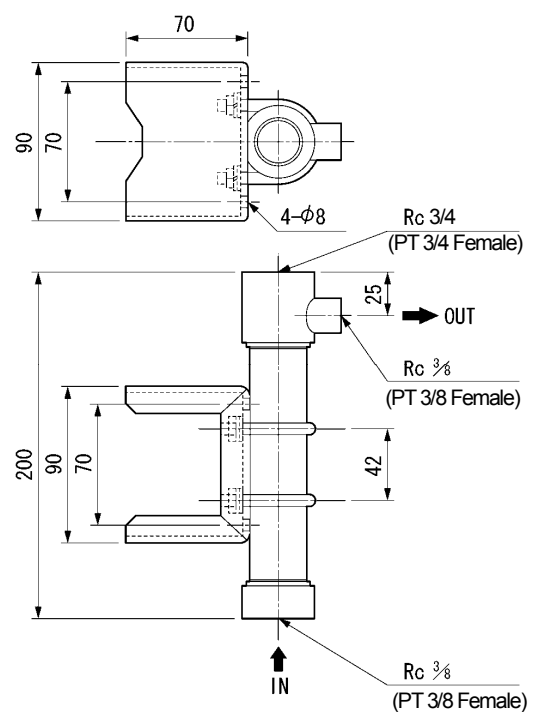


Figure of Pipe Fitting

CH 1001AS



Note1: Being available for wall fitting and pipe fitting (2B pipe). Attached are 2B pipe and U bolt (2 pc) for fitting.

Note2: Adjustable of directions of pipe fitting outlets by 90° according to installation sites.

Note3: Please use Rc3/ 8 (PT3/ 8female) screw pipe connection or hose connection for fittings to chamber.

CAUTION

Do not install this device before consulting instruction manual

Ohkura

OHKURA ELECTRIC CO., LTD.

Head Office / Factory

Sales Offices

URL

e-mail (in English)

Saitama, JAPAN

Tokyo, Osaka, Nagoya, Kyushu

<http://www.ohkura.co.jp/>

contact_e@ohkura.co.jp

Specifications are subject to change without notice.

For further information, a quotation or a demonstration please contact to: